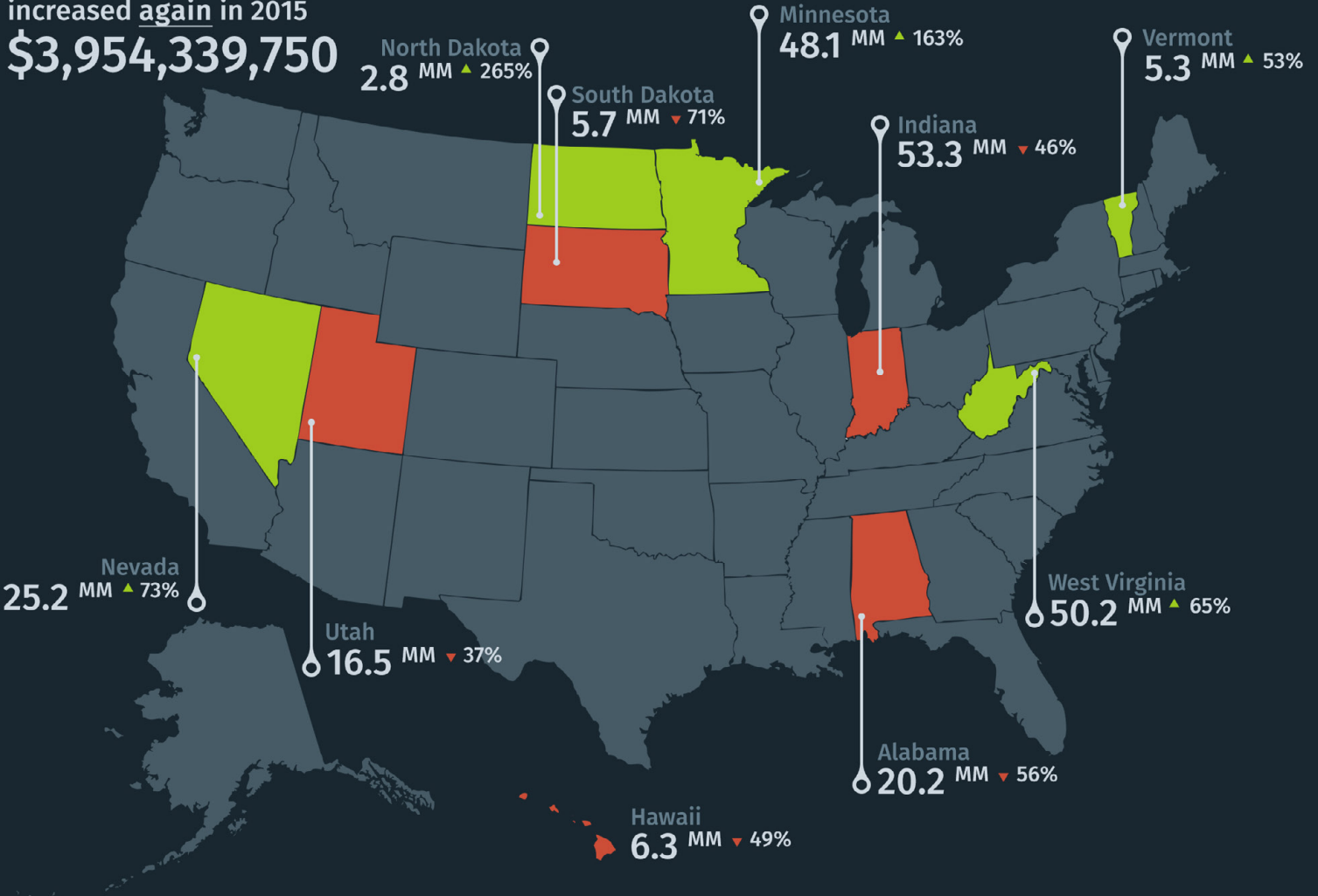


# 2016 MEDICAL MALPRACTICE PAYOUT ANALYSIS

Presented by Diederich Healthcare

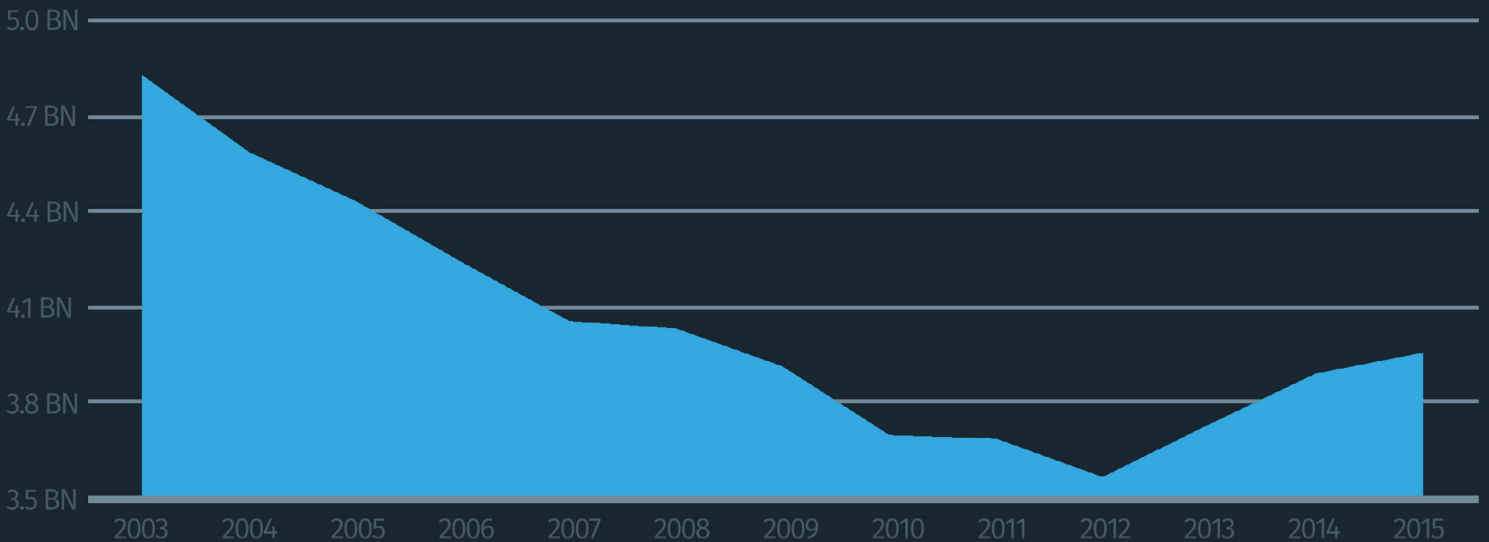
Total Payout amounts  $\uparrow$  1.68%  
increased again in 2015

**\$3,954,339,750**



## MEDICAL MALPRACTICE PAYOUT AMOUNTS

From 2003-2015



# TOTAL PAYOUT AMOUNTS BY STATE

Payout amounts for the United States of America by the million.

\$300 Million or more

\$60 Million to \$80 Million

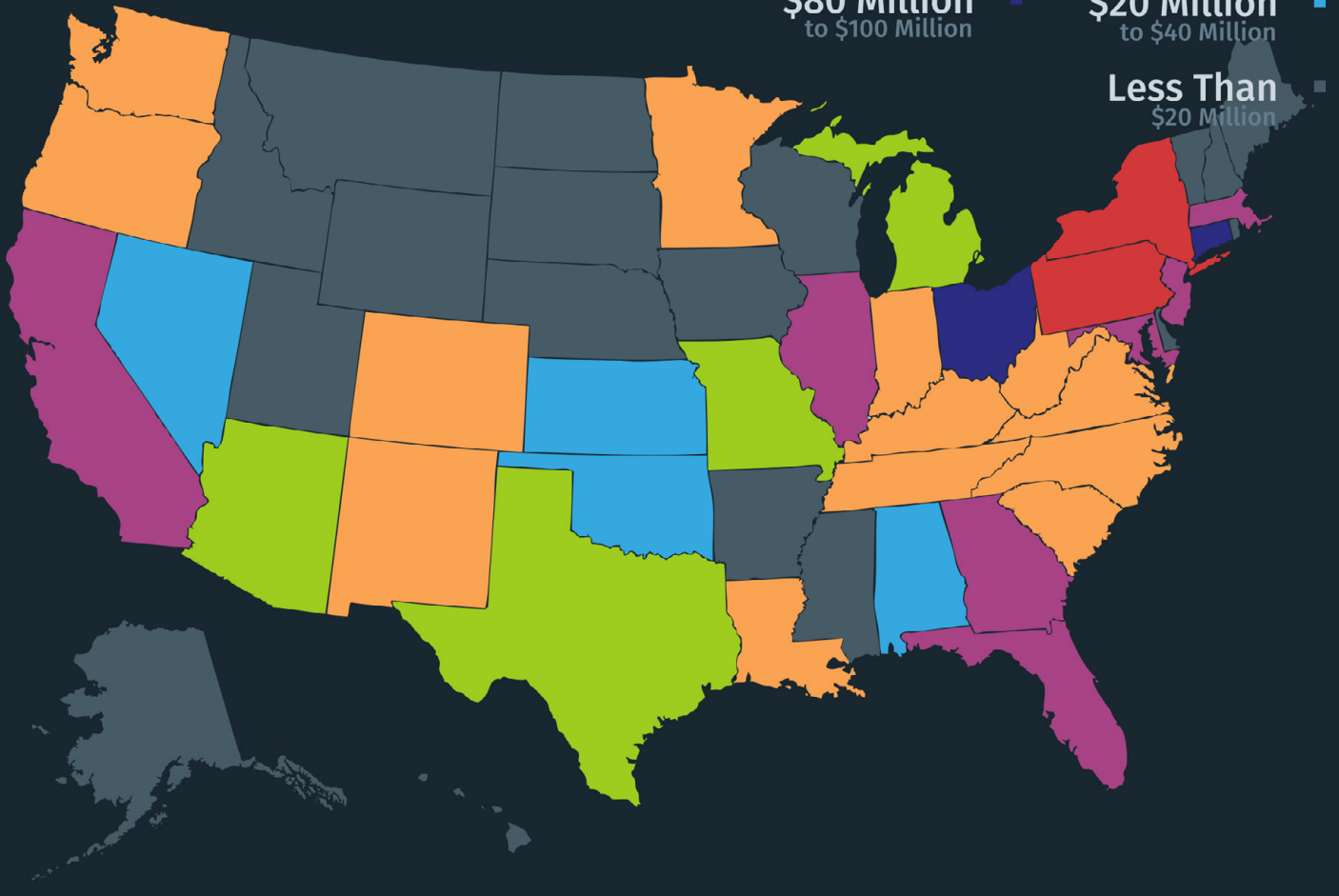
\$100 Million to \$300 Million

\$40 Million to \$60 Million

\$80 Million to \$100 Million

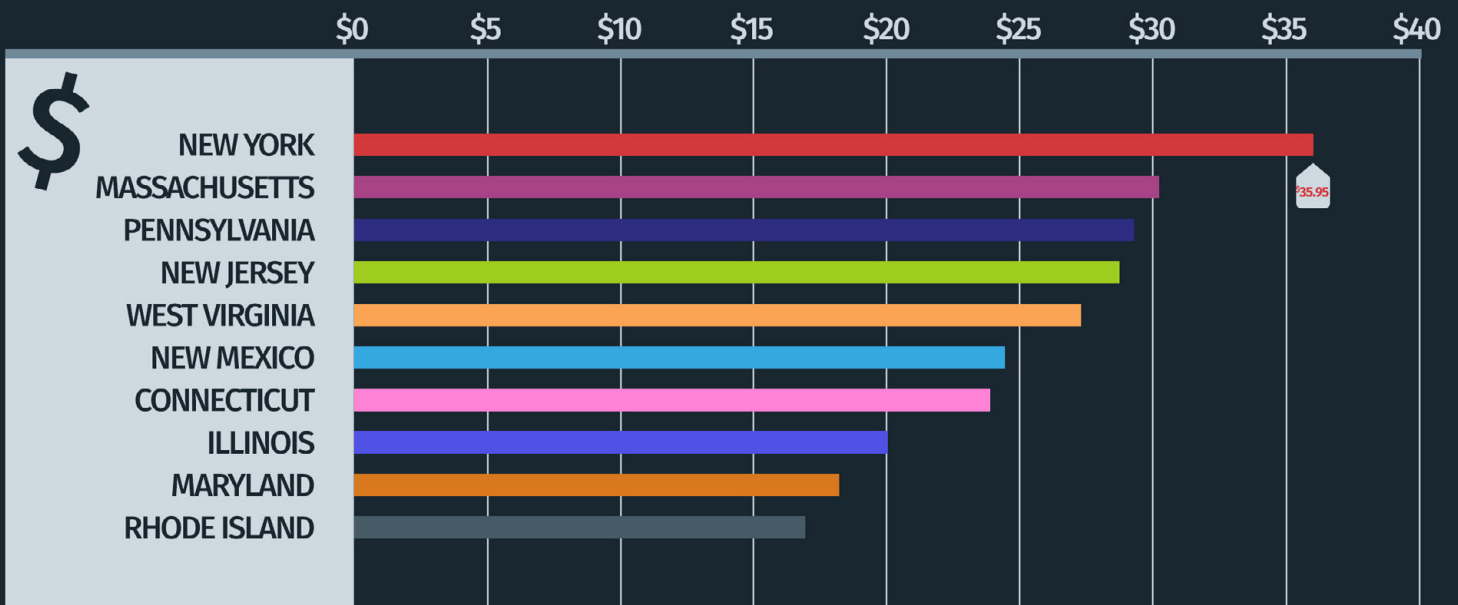
\$20 Million to \$40 Million

Less Than \$20 Million



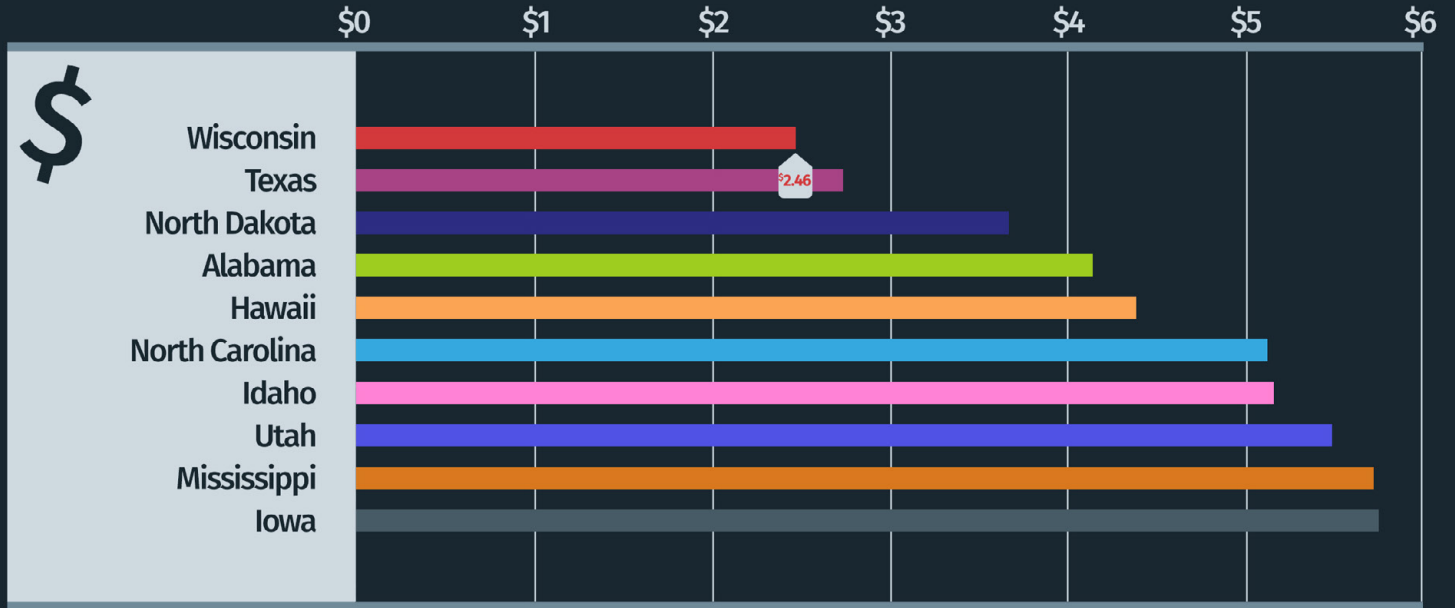
# TOP STATES PER CAPITA

Total paid out per person residing in the state. Population estimates are taken from the US Census Bureau (see references).



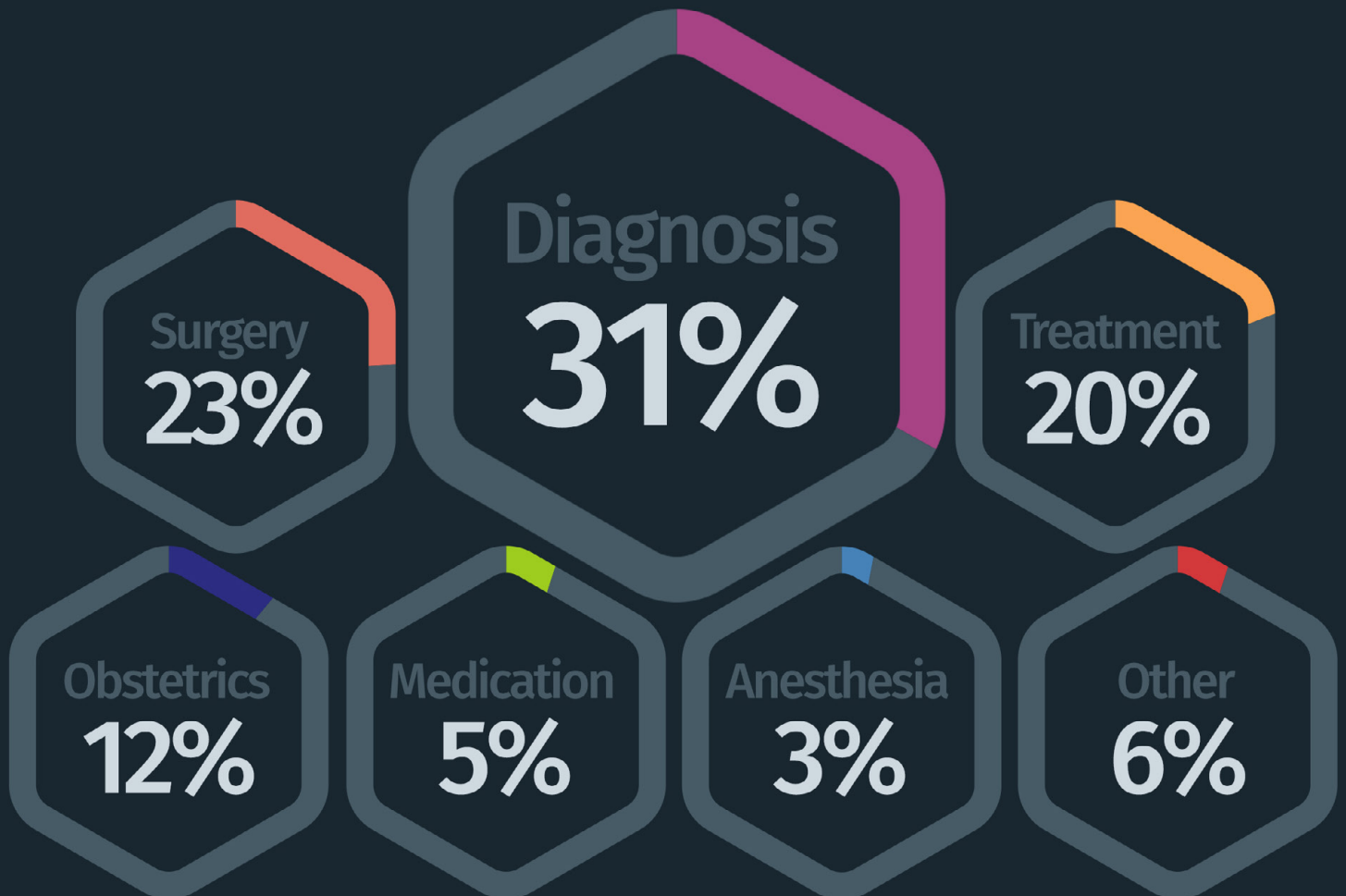
# BOTTOM STATES PER CAPITA

Total paid out per person residing in the state. Population estimates are taken from the US Census Bureau (see references).



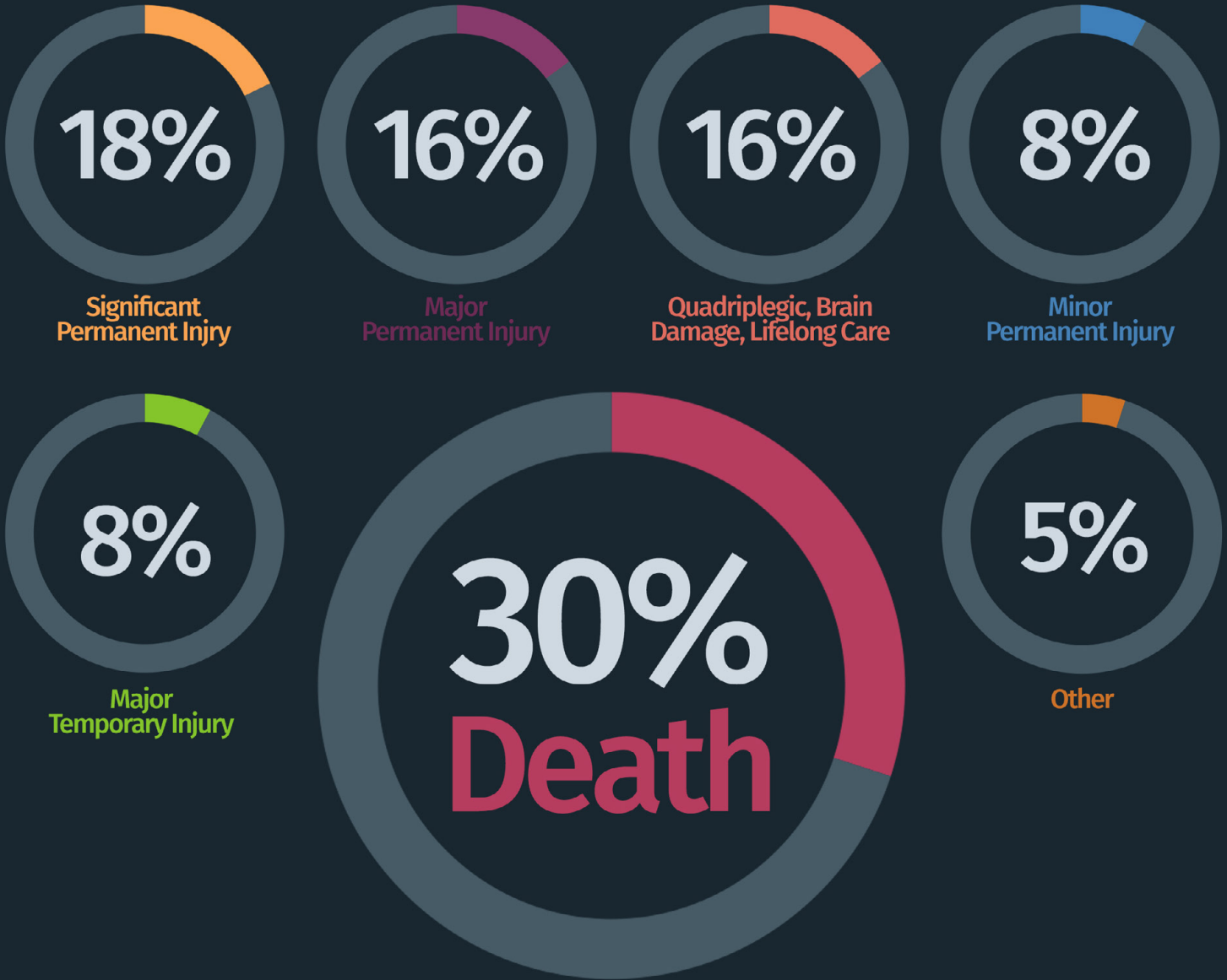
# PAYMENT AMOUNTS BY MALPRACTICE ALLEGATION

Percentages rounded.



# SEVERITY OF OUTCOME

Percentage of payment amounts by severity of the alleged outcome.



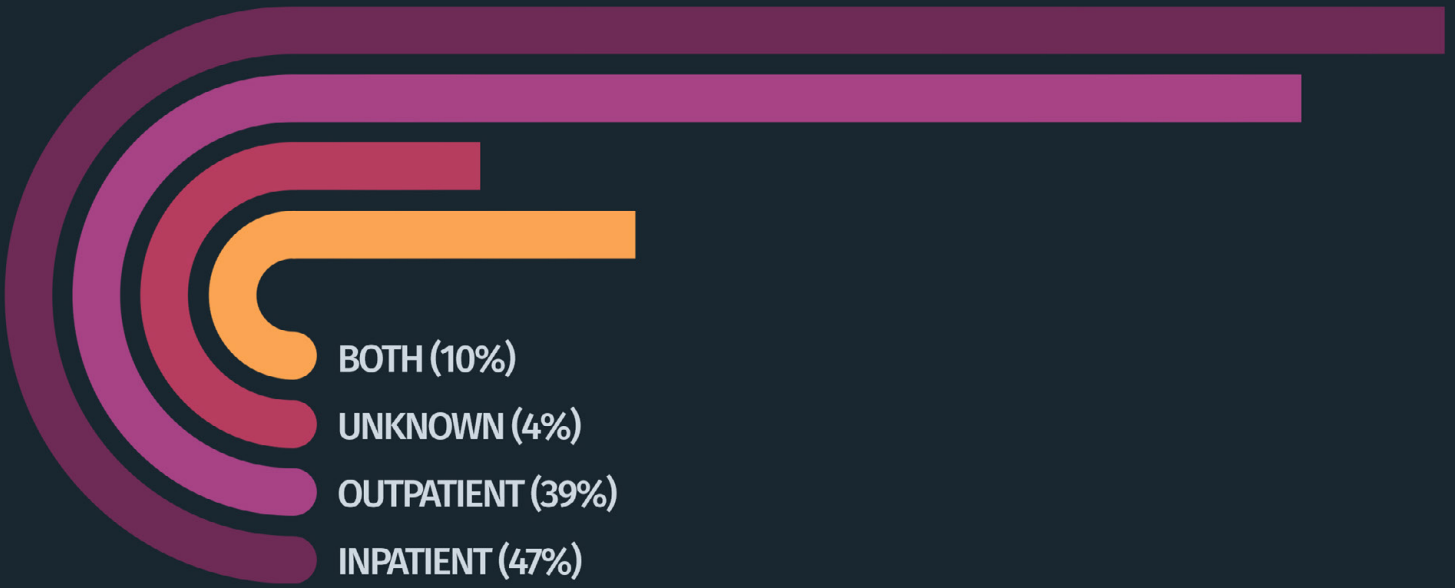
# AVERAGE PAYMENT AMOUNTS

Payment amount by severity of the alleged outcome.

QUADRIPLÉGIC, BRAIN DMG, LIFE CARE	\$ 1,086,711	MINOR PERMANENT INJURY	\$ 216,792
MAJOR PERMANENT INJURY	\$ 548,836	CANNOT BE DETERMINED	\$ 164,091
SIGNIFICANT PERMANENT INJURY	\$ 456,670	EMOTIONAL INJURY ONLY	\$ 90,774
DEATH	\$ 374,944	MINOR TEMPORARY INJURY	\$ 79,935
MAJOR TEMPORARY INJURY	\$ 230,848	INSIGNIFICANT INJURY	\$ 36,225

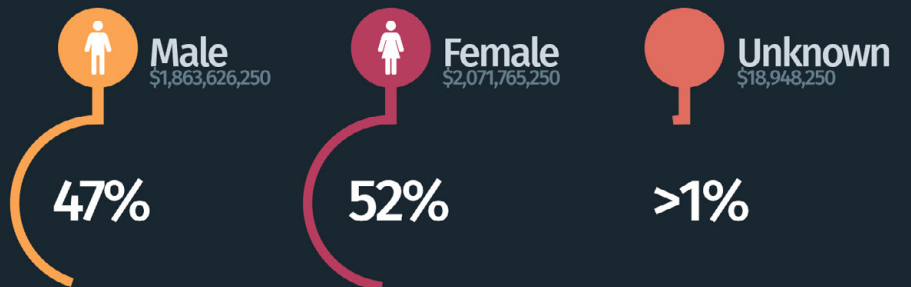
# PATIENT TYPE

Total payment amount by patient type.



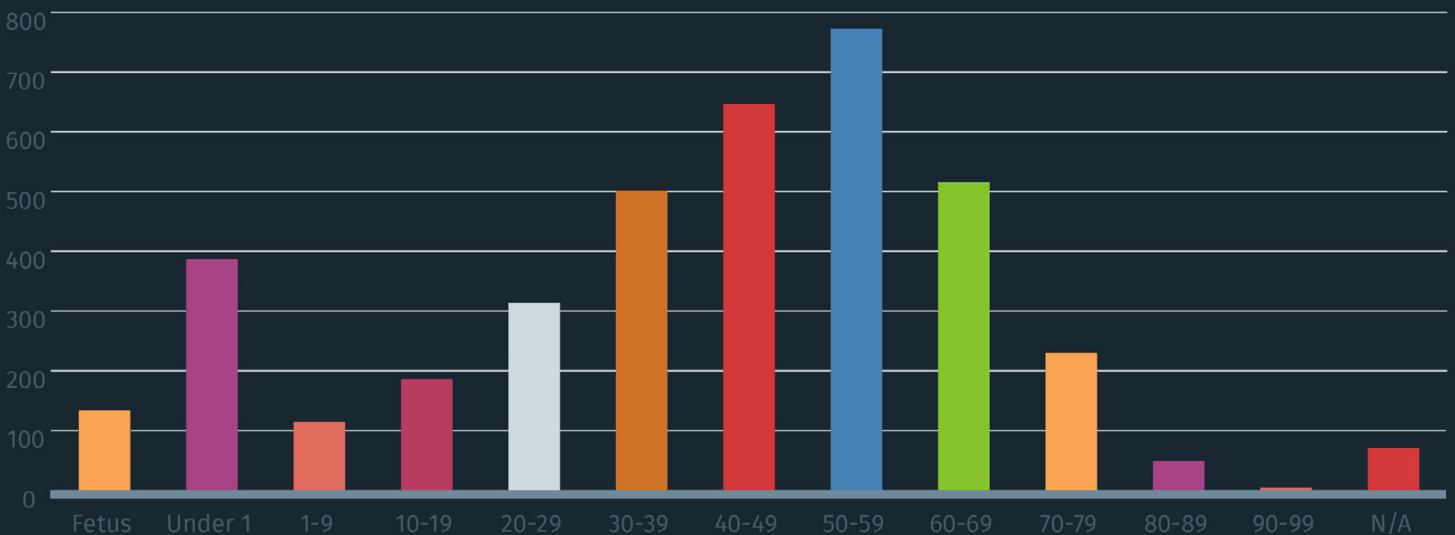
# PATIENT GENDER

Percentage of total payment amount by patient gender.



# PATIENT AGE

Total payment amount by patient age. Y axis represents millions of dollars.





# NORTHEASTERN UNITED STATES

Taking a closer look at the northeastern United States of America, in regard to medical malpractice payouts.

**CONNECTICUT** TOTAL PAYOUT AMOUNT: \$85,837,750 | PER CAPITA: \$23.90 | +38.86% IN TOTAL PAYOUTS FROM 2014

**DELAWARE** TOTAL PAYOUT AMOUNT: \$11,572,500 | PER CAPITA: \$12.23 | -16.16% IN TOTAL PAYOUTS FROM 2014

**DISTRICT OF COLUMBIA** TOTAL PAYOUT AMOUNT: \$9,248,000 | PER CAPITA: \$13.76 | -21.94% IN TOTAL PAYOUTS FROM 2014

**MAINE** TOTAL PAYOUT AMOUNT: \$16,761,000 | PER CAPITA: \$12.61 | -30.15% IN TOTAL PAYOUTS FROM 2014

**MARYLAND** TOTAL PAYOUT AMOUNT: \$108,617,000 | PER CAPITA: \$18.08 | -19.62% IN TOTAL PAYOUTS FROM 2014

**MASSACHUSETTS** TOTAL PAYOUT AMOUNT: \$205,050,000 | PER CAPITA: \$30.18 | +13.61% IN TOTAL PAYOUTS FROM 2014

**NEW HAMPSHIRE** TOTAL PAYOUT AMOUNT: \$13,906,250 | PER CAPITA: \$10.45 | -31.08% IN TOTAL PAYOUTS FROM 2014

**NEW JERSEY** TOTAL PAYOUT AMOUNT: \$256,297,050 | PER CAPITA: \$28.61 | +4.59% IN TOTAL PAYOUTS FROM 2014

**NEW YORK** TOTAL PAYOUT AMOUNT: \$711,718,250 | PER CAPITA: \$35.95 | -4.22% IN TOTAL PAYOUTS FROM 2014

**PENNSYLVANIA** TOTAL PAYOUT AMOUNT: \$374,018,550 | PER CAPITA: \$29.21 | +6.82% IN TOTAL PAYOUTS FROM 2014

**RHODE ISLAND** TOTAL PAYOUT AMOUNT: \$17,893,250 | PER CAPITA: \$16.94 | -30.23% IN TOTAL PAYOUTS FROM 2014

**VERMONT** TOTAL PAYOUT AMOUNT: \$5,305,250 | PER CAPITA: \$8.47 | +52.67% IN TOTAL PAYOUTS FROM 2014

**45.93%**

The total payout amount for the northeast in 2015 was 45.93% of the United States (\$1,816,224,850). The payouts in New York alone were greater than the entire midwest.

**\$28.42**

The northeast had \$28.42 paid out for every individual residing in the region in 2015. This number is almost 3 times greater than the next highest region (the midwest).

**+0.08%**

The total payout amount for the northeast was up 0.08% from 2015. While the rise is lower than previous years, the 0.08% does equate to \$1,534,500.

# MIDWESTERN UNITED STATES

Taking a closer look at the midwestern United States of America, in regard to medical malpractice payouts.

**ILLINOIS** TOTAL PAYOUT AMOUNT: \$258,191,000 | PER CAPITA: \$20.08 | +23.81% IN TOTAL PAYOUTS FROM 2014

**INDIANA** TOTAL PAYOUT AMOUNT: \$53,348,000 | PER CAPITA: \$8.06 | -45.62% IN TOTAL PAYOUTS FROM 2014

**IOWA** TOTAL PAYOUT AMOUNT: \$17,959,800 | PER CAPITA: \$5.75 | -20.01% IN TOTAL PAYOUTS FROM 2014

**KANSAS** TOTAL PAYOUT AMOUNT: \$23,355,750 | PER CAPITA: \$8.02 | -11.21% IN TOTAL PAYOUTS FROM 2014

**MICHIGAN** TOTAL PAYOUT AMOUNT: \$71,618,500 | PER CAPITA: \$7.22 | -8.19% IN TOTAL PAYOUTS FROM 2014

**MINNESOTA** TOTAL PAYOUT AMOUNT: \$48,097,350 | PER CAPITA: \$8.76 | +163.49% IN TOTAL PAYOUTS FROM 2014

**MISSOURI** TOTAL PAYOUT AMOUNT: \$66,951,500 | PER CAPITA: \$11.01 | +37.44% IN TOTAL PAYOUTS FROM 2014

**NEBRASKA** TOTAL PAYOUT AMOUNT: \$13,691,500 | PER CAPITA: \$7.22 | -17.18% IN TOTAL PAYOUTS FROM 2014

**NORTH DAKOTA** TOTAL PAYOUT AMOUNT: \$2,781,250 | PER CAPITA: \$3.67 | +264.99% IN TOTAL PAYOUTS FROM 2014

**OHIO** TOTAL PAYOUT AMOUNT: \$88,787,000 | PER CAPITA: \$7.65 | +31.64% IN TOTAL PAYOUTS FROM 2014

**SOUTH DAKOTA** TOTAL PAYOUT AMOUNT: \$5,714,000 | PER CAPITA: \$6.66 | -71.45% IN TOTAL PAYOUTS FROM 2014

**WISCONSIN** TOTAL PAYOUT AMOUNT: \$14,173,500 | PER CAPITA: \$2.46 | -34.56% IN TOTAL PAYOUTS FROM 2014

**16.81%**

The total payout amount for the midwest in 2015 was \$664,669,150 - making up 16.81% of total payouts in the United States. The only region with a lower amount was the west.

**\$9.79**

The midwest had \$9.79 paid out for every individual residing in the region in 2015. The midwest was only lower than the northeast in regard to per capita payouts.

**+6.05%**

The total payout amount for the midwest was up 6.05% from 2014. The country as a whole was up 1.68% from 2014, making the midwest increase almost 4x of the national average.

# SOUTHERN UNITED STATES

Taking a closer look at the southern United States of America in regard to medical malpractice payouts.

**ALABAMA** TOTAL PAYOUT AMOUNT: \$20,186,250 | PER CAPITA: \$4.15 | -56.37% IN TOTAL PAYOUTS FROM 2014

**ARKANSAS** TOTAL PAYOUT AMOUNT: \$19,621,750 | PER CAPITA: \$6.59 | -21.46% IN TOTAL PAYOUTS FROM 2014

**FLORIDA** TOTAL PAYOUT AMOUNT: \$248,911,150 | PER CAPITA: \$12.28 | +14.29% IN TOTAL PAYOUTS FROM 2014

**GEORGIA** TOTAL PAYOUT AMOUNT: \$111,550,500 | PER CAPITA: \$10.92 | +6.26% IN TOTAL PAYOUTS FROM 2014

**KENTUCKY** TOTAL PAYOUT AMOUNT: \$4,851,800 | PER CAPITA: \$9.68 | -20.63% IN TOTAL PAYOUTS FROM 2014

**LOUISIANA** TOTAL PAYOUT AMOUNT: \$58,968,750 | PER CAPITA: \$12.63 | -0.73% IN TOTAL PAYOUTS FROM 2014

**MISSISSIPPI** TOTAL PAYOUT AMOUNT: \$17,149,750 | PER CAPITA: \$5.73 | -12.98% IN TOTAL PAYOUTS FROM 2014

**NORTH CAROLINA** TOTAL PAYOUT AMOUNT: \$51,449,300 | PER CAPITA: \$5.12 | +23.33% IN TOTAL PAYOUTS FROM 2014

**OKLAHOMA** TOTAL PAYOUT AMOUNT: \$32,503,000 | PER CAPITA: \$8.31 | -10.69% IN TOTAL PAYOUTS FROM 2014

**SOUTH CAROLINA** TOTAL PAYOUT AMOUNT: \$42,090,500 | PER CAPITA: \$8.60 | +43.69% IN TOTAL PAYOUTS FROM 2014

**TENNESSEE** TOTAL PAYOUT AMOUNT: \$45,933,300 | PER CAPITA: \$6.96 | -20.60% IN TOTAL PAYOUTS FROM 2014

**TEXAS** TOTAL PAYOUT AMOUNT: \$75,180,300 | PER CAPITA: \$2.74 | -23.74% IN TOTAL PAYOUTS FROM 2014

**VIRGINIA** TOTAL PAYOUT AMOUNT: \$56,706,750 | PER CAPITA: \$6.76 | -1.23% IN TOTAL PAYOUTS FROM 2014

**WEST VIRGINIA** TOTAL PAYOUT AMOUNT: \$50,204,750 | PER CAPITA: \$27.22 | +65.25% IN TOTAL PAYOUTS FROM 2014

**22.08%**

The total payout amount for the south in 2015 was \$873,307,850 - making up 22.08% of total payout amounts in the United States for 2015.

**\$7.69**

The south had \$7.69 paid out for every individual residing in the region in 2015. The south was much lower than the average with a per capita rate of \$12.30 for the country.

**-0.62%**

The total payout amount for the south was down 0.62% from 2014. The south was the only region to have a decline in payouts. The country as a whole was up 1.68% from 2014.



# WESTERN UNITED STATES

Taking a closer look at the western United States of America in regard to medical malpractice payouts.

**ALASKA** TOTAL PAYOUT AMOUNT: \$5,682,500 | PER CAPITA: \$7.70 | -31.06% IN TOTAL PAYOUTS FROM 2014

**ARIZONA** TOTAL PAYOUT AMOUNT: \$71,498,000 | PER CAPITA: \$10.47 | +12.92% IN TOTAL PAYOUTS FROM 2014

**CALIFORNIA** TOTAL PAYOUT AMOUNT: \$263,874,600 | PER CAPITA: \$6.74 | +19.17 IN TOTAL PAYOUTS FROM 2014

**COLORADO** TOTAL PAYOUT AMOUNT: \$43,931,800 | PER CAPITA: \$8.05 | -11.20% IN TOTAL PAYOUTS FROM 2014

**HAWAII** TOTAL PAYOUT AMOUNT: \$6,269,500 | PER CAPITA: \$4.38 | -48.96% IN TOTAL PAYOUTS FROM 2014

**IDAHO** TOTAL PAYOUT AMOUNT: \$8,548,250 | PER CAPITA: \$5.17 | -30.49% IN TOTAL PAYOUTS FROM 2014

**MONTANA** TOTAL PAYOUT AMOUNT: \$8,276,250 | PER CAPITA: \$8.01 | -5.11% IN TOTAL PAYOUTS FROM 2014

**NEVADA** TOTAL PAYOUT AMOUNT: \$25,242,000 | PER CAPITA: \$8.73 | +72.58% IN TOTAL PAYOUTS FROM 2014

**NEW MEXICO** TOTAL PAYOUT AMOUNT: \$50,809,500 | PER CAPITA: \$24.37 | +41.80% IN TOTAL PAYOUTS FROM 2014

**OREGON** TOTAL PAYOUT AMOUNT: \$42,919,750 | PER CAPITA: \$10.65 | +4.95% IN TOTAL PAYOUTS FROM 2014

**UTAH** TOTAL PAYOUT AMOUNT: \$16,455,500 | PER CAPITA: \$5.49 | -36.80% IN TOTAL PAYOUTS FROM 2014

**WASHINGTON** TOTAL PAYOUT AMOUNT: \$49,122,750 | PER CAPITA: \$6.85 | -27.37% IN TOTAL PAYOUTS FROM 2014

**WYOMING** TOTAL PAYOUT AMOUNT: \$7,507,500 | PER CAPITA: \$12.81 | -4.28% IN TOTAL PAYOUTS FROM 2014

## 15.18%

The total payout amount for the west in 2015 was \$600,137,900 - making up 15.18% of total payouts in the USA. This makes the total payout amount lower than any other region.

## \$7.89

The west had \$7.89 paid out for every individual residing in the region in 2015. The per capita rate in the west was lower than any other region in 2014, but is now higher than the south by 20 cents.

## +5.54%

The total payout amount for the west was up 5.54% from 2014. This contrasts with 2014 when the west actually saw a decline. The country as a whole was up 1.68% from 2014.

## REFERENCES & NOTES

Where the data came from and how it was analyzed.

“National Practitioner Data Bank Public Use Data File”

September 1, 1990 - December 31, 2015

U.S. Department of Health and Human Services

All data not pertaining to the 50 United States of America and the District of Columbia were removed for the purposes of this analysis.

State data was determined by evaluating Work State (workstat), Home State (homestat) and Licensure State (licnstat), in that order.

Figures used for the ‘per capita’ statistics are based on July 2015 population estimates from the U.S. Census Bureau:

Table 1. Annual Estimates of the Resident Population for the United States, Regions, States, and Puerto Rico: April 1, 2010 to July 1, 2015 (NST-EST2015-01)

Source: U.S. Census Bureau, Population Division

Release Date: December 2015

To use this infographic or its data for any purpose or to embed the graphic on another web-site, please include proper credit and link to the original piece on the Diederich Healthcare web-site: <http://www.diederichhealthcare.com/the-standard/2016-medical-malpractice-payout-analysis/>

## ABOUT DIEDERICH HEALTHCARE

Who we are and what we do.

Diederich Healthcare’s network of over two-hundred contracted insurance affiliates assures healthcare clients greater portability, market accessibility, and effective consultation. Diederich Healthcare provides comprehensive medical malpractice insurance and consulting services to over 13,000 healthcare providers throughout the United States, Guam, and Puerto Rico. Through Diederich’s 13 U.S. regional offices and multiple sales and service centers, the company strives to provide superior client services. As a leader in the industry for almost 40 years, our goal is to deliver cost-effective quality insurance to our physician clients. To obtain a quote for medical malpractice insurance, please call us at 800-457-7790 or complete a quote form at:

<http://www.diederichhealthcare.com/get-a-quote/>